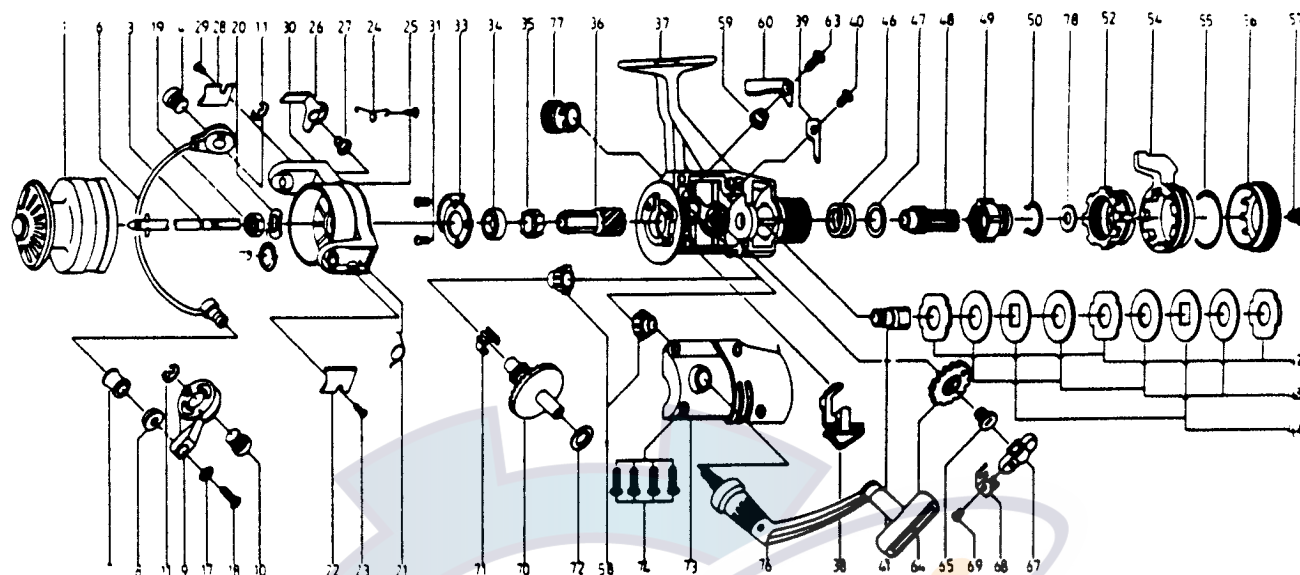


# QUANTUM® QG40



**KEY PART**

| NO. NO.  | DESCRIPTION           | PRICE |
|----------|-----------------------|-------|
| 1 JT321  | SPOOL ASSEMBLY        | 6.31  |
| 3 DT315  | MAIN SHAFT ASSY.      | 2.24  |
| 4 DT044  | BAIL HOLDER PIN       | 1.14  |
| 6 DT347  | BAIL ARM ASSY.        | 5.16  |
| 7 DT004  | LINE ROLLER           | 1.55  |
| 8 PB016  | LN ROLLER BUSH.       | .63   |
| 9 PB007  | BAIL ARM A            | 1.72  |
| 10 DT043 | ARM LEVER PIN         | 1.37  |
| 11 DT002 | E-CLIP                | .85   |
| 17 PB102 | BAIL AXLE WASHER      | .29   |
| 18 PB108 | BAIL AXLE SCREW       | .39   |
| 19 NB006 | ROTOR NUT             | .85   |
| 20 DT065 | ROTOR RETAINER        | .58   |
| 21 DT022 | BAIL SPRING           | .69   |
| 22 PB087 | BAIL SPRING COVER     | .63   |
| 23 BT085 | BAIL SPR. COVER SCREW | .63   |
| 24 DT049 | KICK LEVER SPRING     | .58   |
| 25 DT058 | KICK LEVER SPR. SCR.  | .46   |
| 26 DT019 | KICK LEVER            | 1.32  |
| 27 DT037 | KICK LEVER SCREW      | .34   |
| 28 PB024 | TRIP LVR. CVR.        | .63   |
| 29 BT085 | BAIL SPR. COVER SCREW | .63   |
| 30 DT009 | ROTOR ASSY.           | 7.46  |
| 31 BT080 | BEARING PLATE SCREW   | .34   |
| 33 DT040 | BEARING PLATE         | 1.83  |
| 34 NB028 | BALL BEARING          | 7.97  |
| 35 NB060 | A/R RATCHET           | .98   |
| 36 DT011 | PINION GEAR           | 3.61  |
| 37 JT301 | BODY ASSEMBLY         | 11.29 |
| 38 DT059 | ANTI-REVERSE LEVER    | .58   |
| 39 DT068 | CLICK CLAW            | .39   |
| 40 BT067 | CLICK CLAW SCREW      | .29   |
| 41 DT104 | SLIDER HOLDER         | .69   |
| 42 DT030 | REAR DRAG WSHR. "A"   | 1.27  |
| 43 DT039 | REAR DRAG WSHR. "B"   | 1.43  |
| 44 DT071 | REAR DRAG WSHR. "D"   | 1.03  |
| 46 DT031 | REAR DRAG COIL SPR.   | 1.27  |
| 47 DT046 | REAR DRAG ADJ. WSHR.  | 1.03  |
| 48 DT112 | REAR DRAG NUT         | 1.14  |
| 49 DT017 | SLIDING SCREW         | 1.14  |
| 50 DT033 | BACK CLICK CLAW       | .46   |

**KEY PART**

| NO. NO.  | DESCRIPTION           | PRICE |
|----------|-----------------------|-------|
| 52 JT093 | FIGHTING PULL SCREW   | 2.00  |
| 54 JT094 | FIGHTING LEVER        | 4.30  |
| 55 JT095 | FIGHTING LVR STOP SPG | .92   |
| 56 JT032 | REAR DRAG CAP         | 2.35  |
| 57 DT079 | REAR DRAG CAP SCREW   | .34   |
| 58 BT013 | BODY COVER BUSHING    | .69   |
| 59 DT014 | A/R CLAW BUSHING      | .69   |
| 60 DT063 | A/R CLAW (N)          | .75   |
| 63 DT089 | A/R CLAW SCREW        | .39   |
| 64 NB053 | OSCILLATING GEAR      | .92   |
| 65 NB078 | OSC. GEAR SCR.        | .39   |
| 67 NB025 | OSCILLATOR SLIDER     | 1.95  |
| 68 NB083 | STOPPER               | .39   |
| 69 NB084 | STOPPER SCREW         | .29   |
| 70 NB012 | CRANK GEAR            | 3.39  |
| 71 NB086 | SLIDER SPRING         | .39   |
| 72 RB026 | CRANK GEAR SHIM       | .29   |
| 73 JT323 | BODY COVER ASSY.      | 6.19  |
| 74 DT057 | BODY COVER SCREW      | 1.43  |
| 76 JT318 | HANDLE ASSEMBLY       | 6.82  |
| 77 HT073 | HANDLE SCREW CAP      | .69   |
| 78 DT046 | REAR DRAG ADJ. WSHR.  | 1.03  |
| 79 DT120 | ROTOR RET. SPRG. W/S  | .92   |
| 80 JT005 | BACK CLAW (FIGHTING)  | 1.09  |
| 81 JT018 | FIGHTING CLICK WASHER | 1.14  |

\*Not shown in diagram

Key 80 fits between keys 49, 50

Key 81 fits between keys 52, 54

Prices subject to change without notice. Prices do not include postage and handling.

**PLEASE ORDER BY PART NUMBER**

Rev. 11/90

Zebco Division Brunswick Corporation, Box 270, Tulsa, OK 74101 USA 918-836-5581

